

# Electric Vehicles in Juneau

Connie Hulbert, President  
Alaska Electric Light & Power Co.



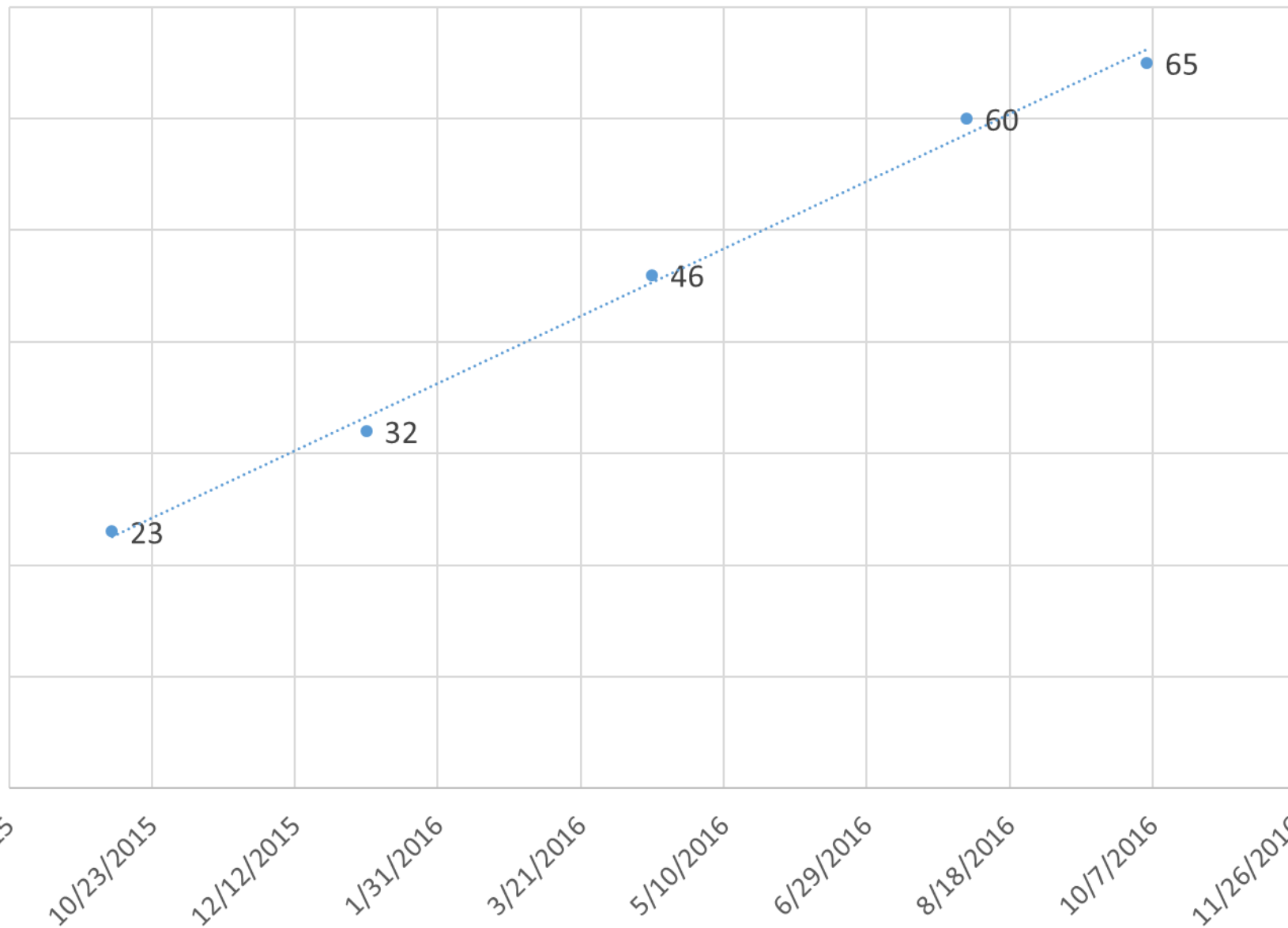




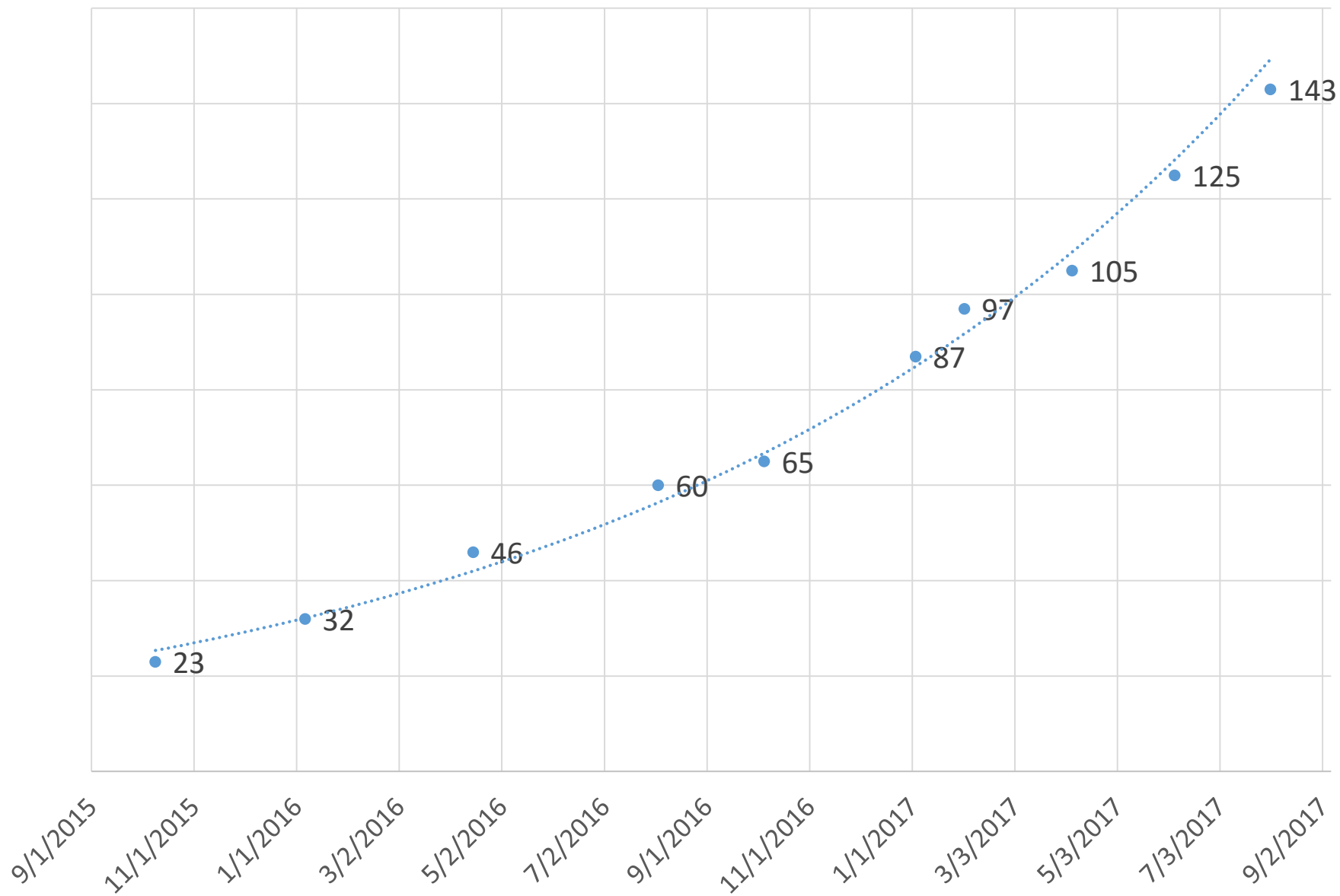




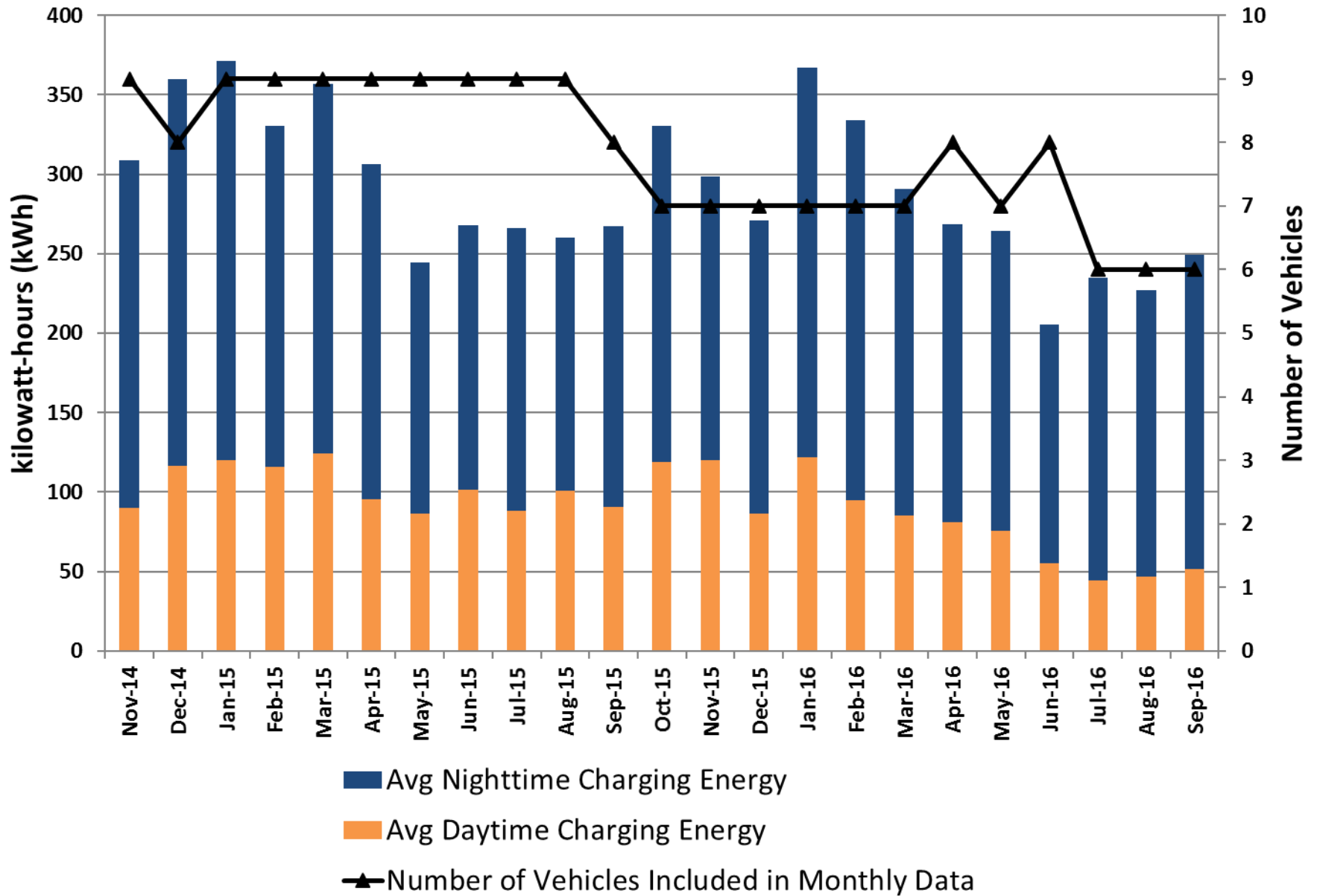
## Nissan Leafs Registered in Juneau



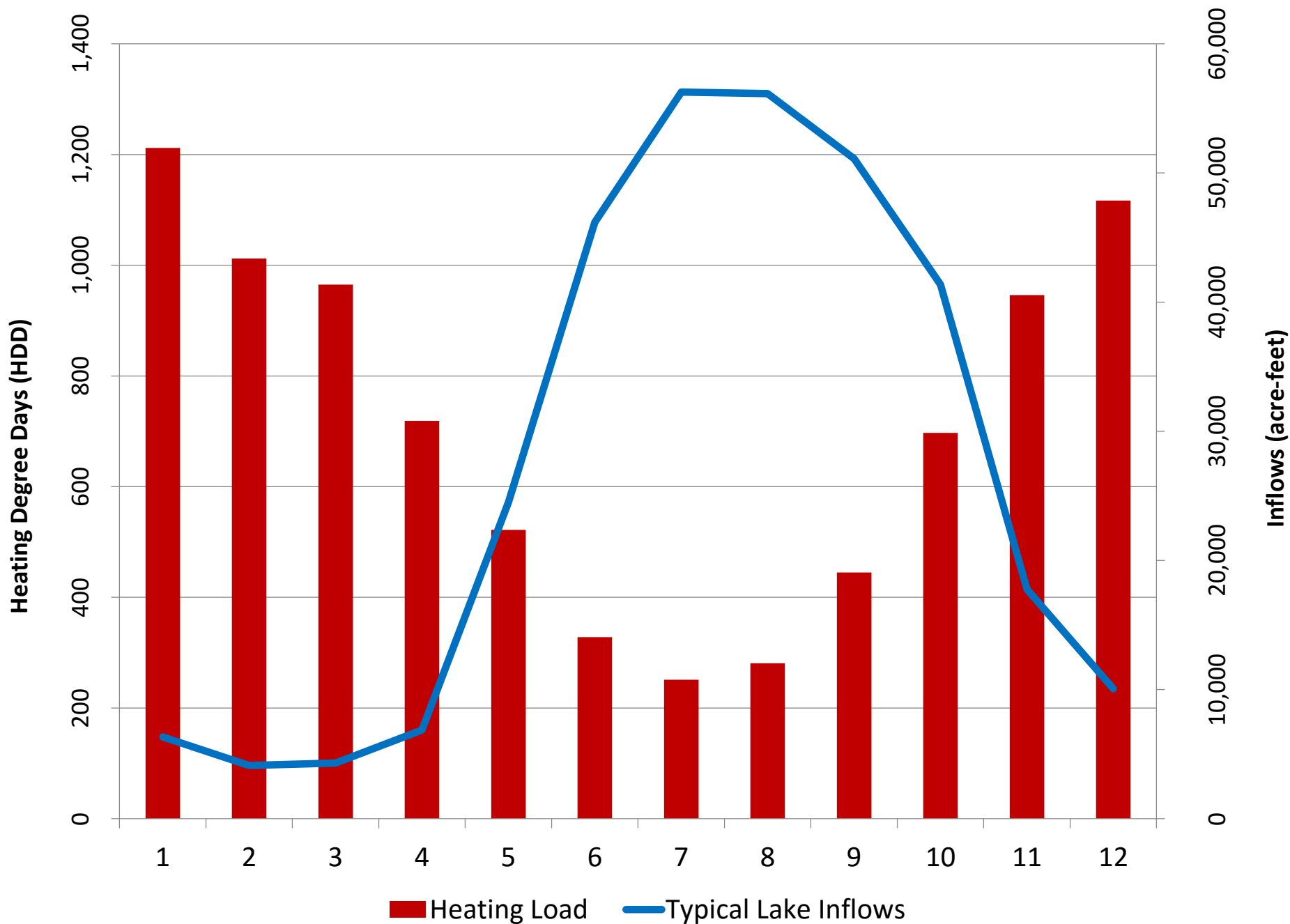
## Nissan Leafs Registered in Juneau



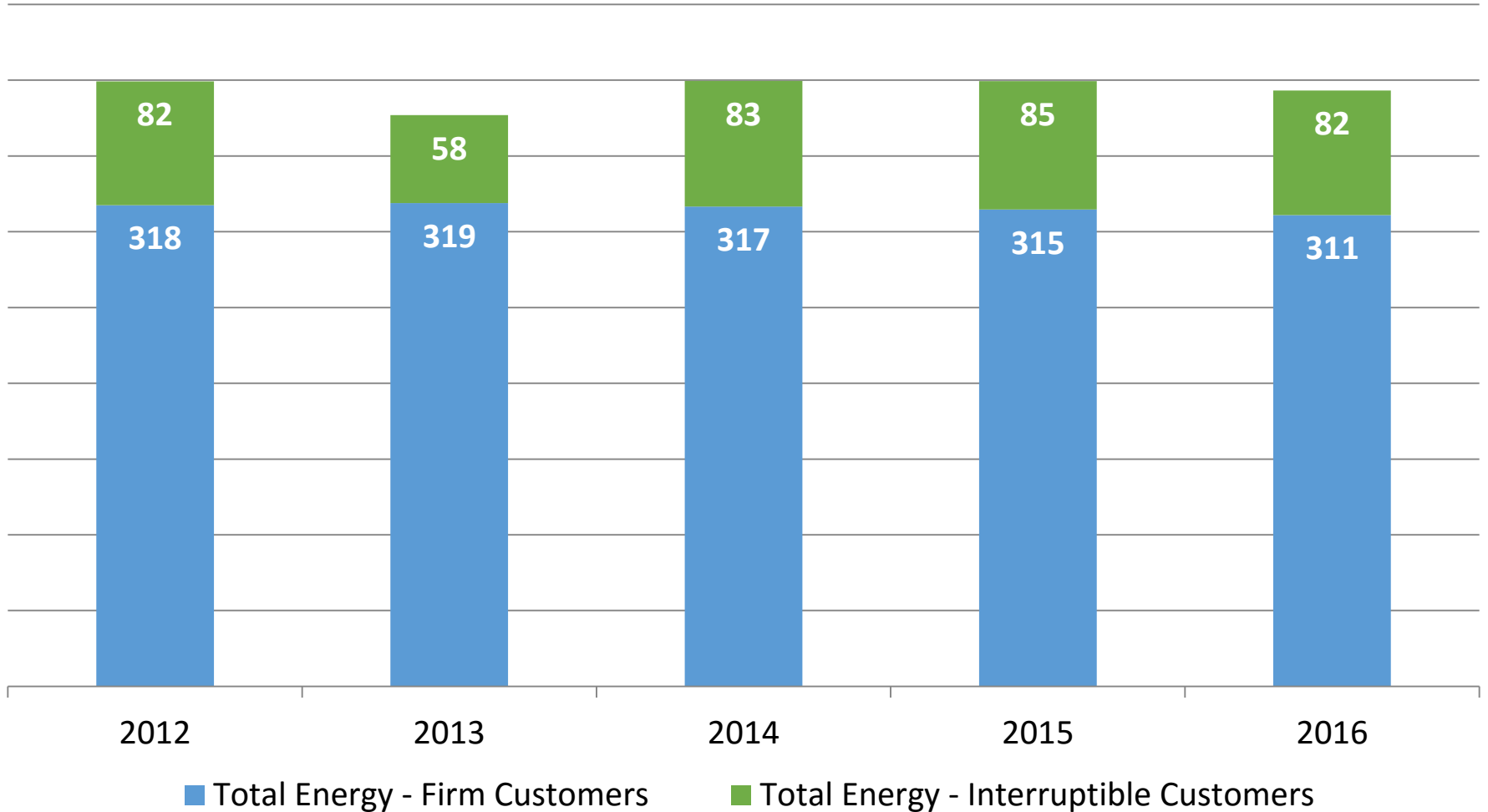
## Rate X1 Electric Vehicle Energy Use



# Heating Degree Days and Long Lake Inflows by Month

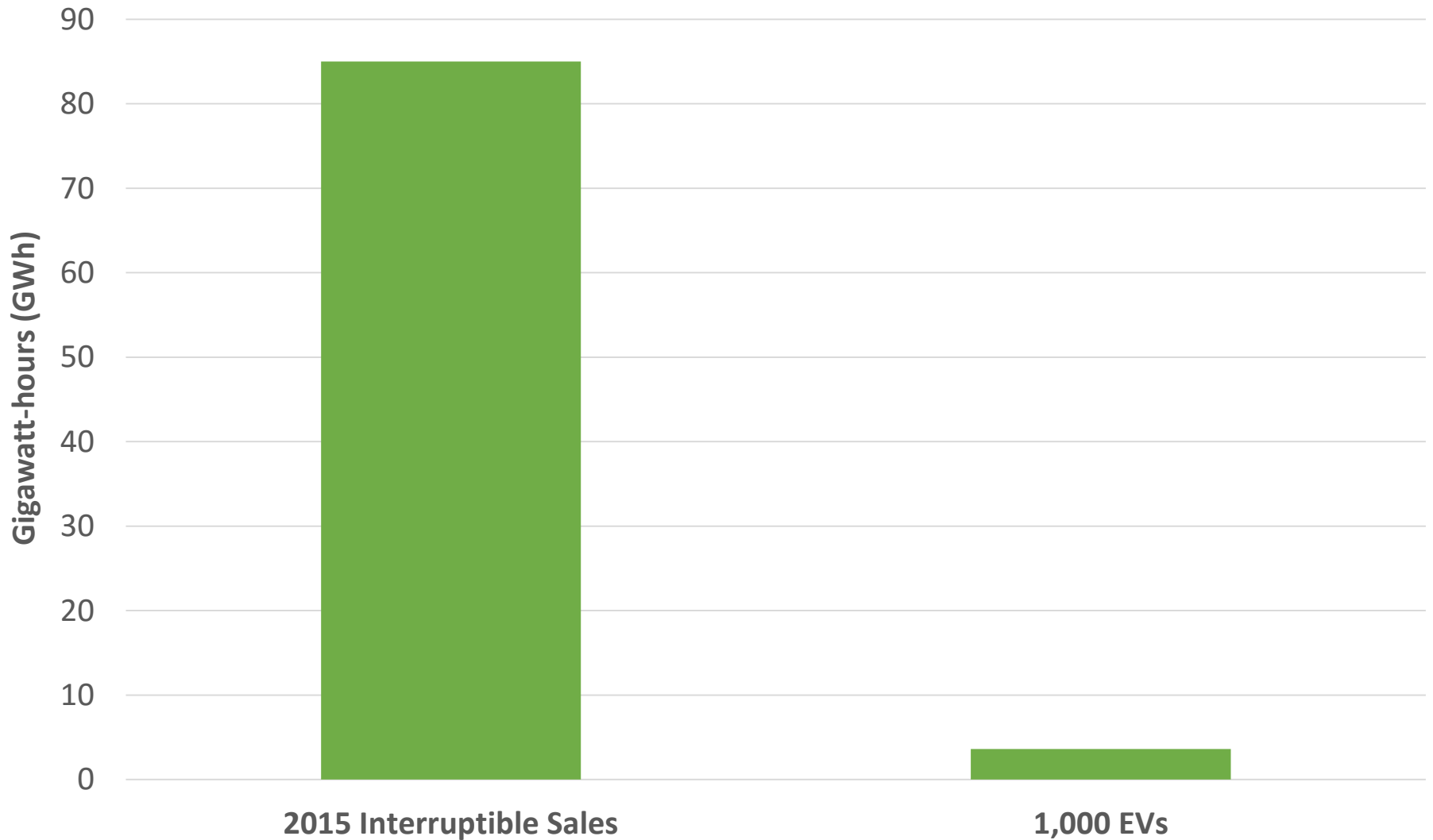


# AEL&P Energy Sales





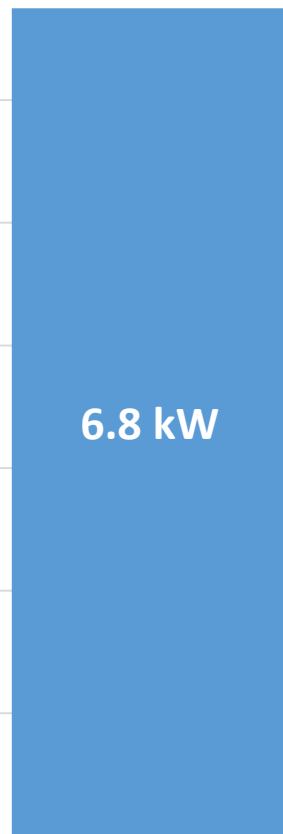
# AEL&P Energy Sales



# Level II Charge Equipment

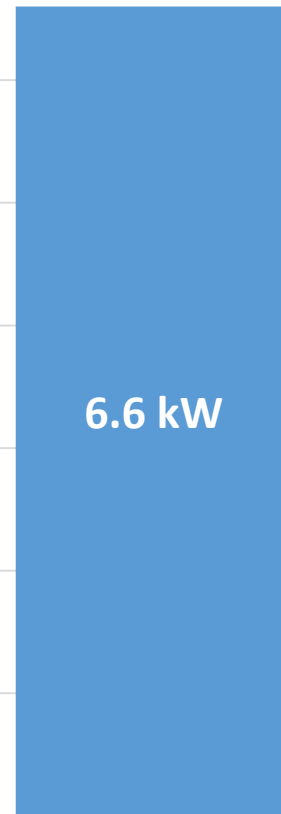


# Level II Charge Equipment



6.8 kW

Home Heated with an Oil Boiler

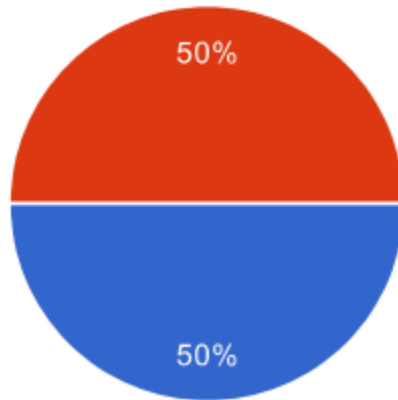


6.6 kW

Level II Charger

# Level II Charge Equipment

**Do you have a Level II charger installed at home?**



Yes	<b>13</b>	50%
No	<b>13</b>	50%



**Rate Schedule 93** allows residential and small commercial EV owners the opportunity to reduce the cost to operate their EVs by charging their vehicles when loads on the electric grid are low.

**Rate Schedule 94** complements the off-peak charging rate by allowing EV owners to participate in Rate Schedule 93 without the upfront cost of purchasing a Level II charging station and installing a separate metering point.



# AELP EV Docket

Nov 28 '16

- AELP files TA455-1 to create a permanent replacement for our experimental EV Rate Schedule X1 and new schedule for charge equipment rental

Jan 10 '17

- U-17-002 - Order to suspend and establish interim rates on two new rate schedules
- Effective date for Rate 93 – Off-Peak Electric Vehicle Charging

Apr 10 '17

- Effective date for Rate 94 – Electric Vehicle Supply Equipment

July 5 '17

- Public hearing

Oct 4 '17

- Final order due

# AELP Rate 93 – Off-Peak Electric Vehicle Charging

General Rates		
	Peak Season (Nov-Apr)	Off-Peak Season (Jun-Oct)
Residential	\$ 0.1240	\$ 0.1020
Commercial	\$ 0.1202	\$ 0.0956

Rate 93 Charging Rates: 10PM - 5AM		
	Peak Season (Nov-Apr)	Off-Peak Season (Jun-Oct)
Residential EV	\$ 0.0602	\$ 0.0526
Commercial EV	\$ 0.0691	\$ 0.0612

Savings for Nighttime Charging		
	Peak Season (Nov-Apr)	Off-Peak Season (Jun-Oct)
Residential	\$ 0.0638	\$ 0.0494
Commercial	\$ 0.0511	\$ 0.0344

# Residential Example

300 kWh/month, 70% nighttime Charging



# Small Commercial Example

300 kWh/month, 70% nighttime Charging

