



United States
Department of
Agriculture

Rural Development



Jessie Huff

(907) 761-7768

Jessie.huff@ak.usda.gov

Alaska Power Association - Annual Meeting
9/15/2017

One USDA, Seven Mission Areas

Farm & Foreign
Agricultural
Services

Food, Nutrition
& Consumer
Services

Food Safety

Marketing &
Regulatory
Programs

Natural
Resources &
Environment

Research,
Education &
Economics

Rural
Development

Rural Development Offices



USDA RD – Assistance Areas

- Business Programs
- **Housing**
- **Community Programs**
- **Water & Environmental Programs/RAVG**
- **Electric Rural Utility Services (RUS)**
- **Telecommunications (RUS)**





Rural Business-Cooperative Service (RBS)

Small Business. An entity or utility, as applicable, described below that meets Small Business Administration's (SBA) definition of Small Business as found in 13 CFR part 121.301(a) or (b). With the exception of the entities identified in this paragraph, all other non-profit entities are ineligible.

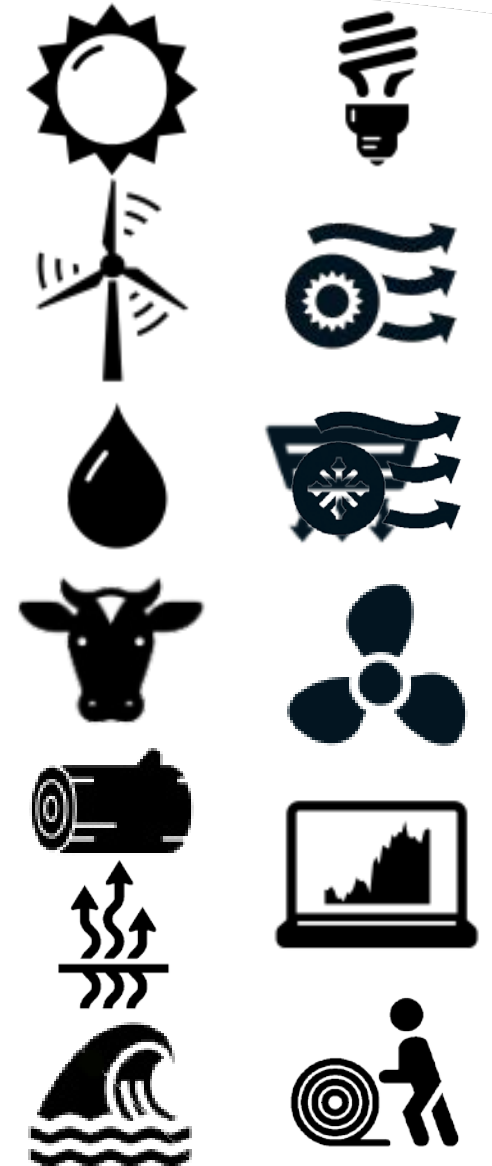
- (1) A private for-profit entity, including a sole proprietorship, partnership, and corporation;
- (2) A cooperative (including a cooperative qualified under section 501(c)(12) of the Internal Revenue Code);
- (3) An electric utility (including a Tribal or governmental electric utility) that provides service to rural consumers and must operate independent of direct government control; and
- (4) Tribal corporations or other Tribal business entities (as described in paragraph (4)(i) and (ii) of this definition). The Agency shall determine the Small Business status of such Tribal entity without regard to the resources of the Tribal government.
 - (i) Chartered under Section 17 of the Indian Reorganization Act (25 U.S.C. 477), or
 - (ii) Other Tribal business entities that have similar structures and relationships with their Tribal governments as determined by the Agency.

Rural Business-Cooperative Service (RBS)

Business Programs:

Technical Assistance Opportunities, Grants and Loans for Business Development

- REAP 25% grant and loan (twice a year)
- REAP - REDA 75% grant for energy audit (January)
- Socially disadvantaged group grant (June-ish)
- Re-Lending programs – REDLG (multiple programs within both RBS and RUS)



Rural Energy for America Programs

- Renewable Energy Systems & Energy Efficiency Improvement Loans & Grants
- Energy Audits & Renewable Energy Development Grants



Rural Business-Cooperative Service (RBS)

Energy Efficiency Improvements		Renewable Energy Systems	
Minimum Grant Request	\$1,500 Total eligible project costs \geq \$6,000	Minimum Grant Request	\$2,500 Total eligible project costs \geq \$10,000
Maximum Grant Request	\$250,000 Total eligible project costs \geq \$1 million	Maximum Grant Request	\$500,000 Total eligible project costs \geq \$2 million

Rural Business-Cooperative Service (RBS)

Minimum Loan Amount	\$5,000 Total eligible project costs \geq \$6,667
Maximum Loan Amount	\$25 million Total eligible project costs \geq \$33.4 million
Details	<ul style="list-style-type: none">• USDA guarantees a commercial loan; applicant must have a willing lender.• Terms are negotiated between the lender and borrower.• Fees, appraisals, equity & collateral requirements apply.

REAP – Energy Efficiency

Alpine Holdings Inc. - EE UPGRADE In two locations (Tok and Chicken , AK)



LED lights
410 Bulbs changed out



\$22,473 Total Project Cost
\$5,618 REAP 25% EE Grant

8,591 kWh/yr saved (w/GHG Calc .914) - Chicken
7,168 kWh/yr saved on electric bill - Tok
Approximately \$8,521 saved annually
2.6 year payback before grant



What is Community Solar?

Local solar electric generating projects with multiple, unrelated, utility customers who receive economic benefits from the project.

Allows customers to participate in the generation of renewable energy without physically owning or installing assets on their property.



What is Community Solar?

Community Solar comes in many Shapes and Sizes:

- Utility Run Programs
- 3rd Party Subscription Programs
- Size ranges from 5kW – 10+ MW



REAP Community Solar Requirements

- ✓ Must be an eligible applicant and have an eligible project
- ✓ Applicant must own and control the system
- ✓ Applicant must determine system type and negotiate & enter contracts
- ✓ Subscribers not subject to eligibility requirements as long as they are purchasing power or credits under agreement and not owning/leasing equipment



Four County Renewable Energy, LLC
(subsidiary of Jo-Carroll Electric)

176,600 kwh production
potential (16 homes)

\$89,125 REAP Grant

250 subscriptions available
-Village
-Residential (majority)

Connected to Jo-Carroll
Electric's distribution system
*20 year subscriptions
*Subscribers get monthly credit
at avoided cost based on output





Blue Lake Solar, Minnesota

5 Million kWh production
potential

\$3.5 Million REAP Loan

This is a 3.7 MW project
that was developed to
sell power to
municipalities.

Electricity produced is
enough to power ~450
homes.





Rural Business-Cooperative Service (RBS)

Subscriber Benefits?

Choice to participate in a larger
renewable energy project

Financial benefit from their portion of
the generation

Environmental attributes

Internal value from participating in green
energy project



Single-Family Home Repair Loans and Grants

- Access for persons with disabilities
- Roofs and septic tanks
- Energy-saving upgrades, and more.



Rural Housing Service (RHS)

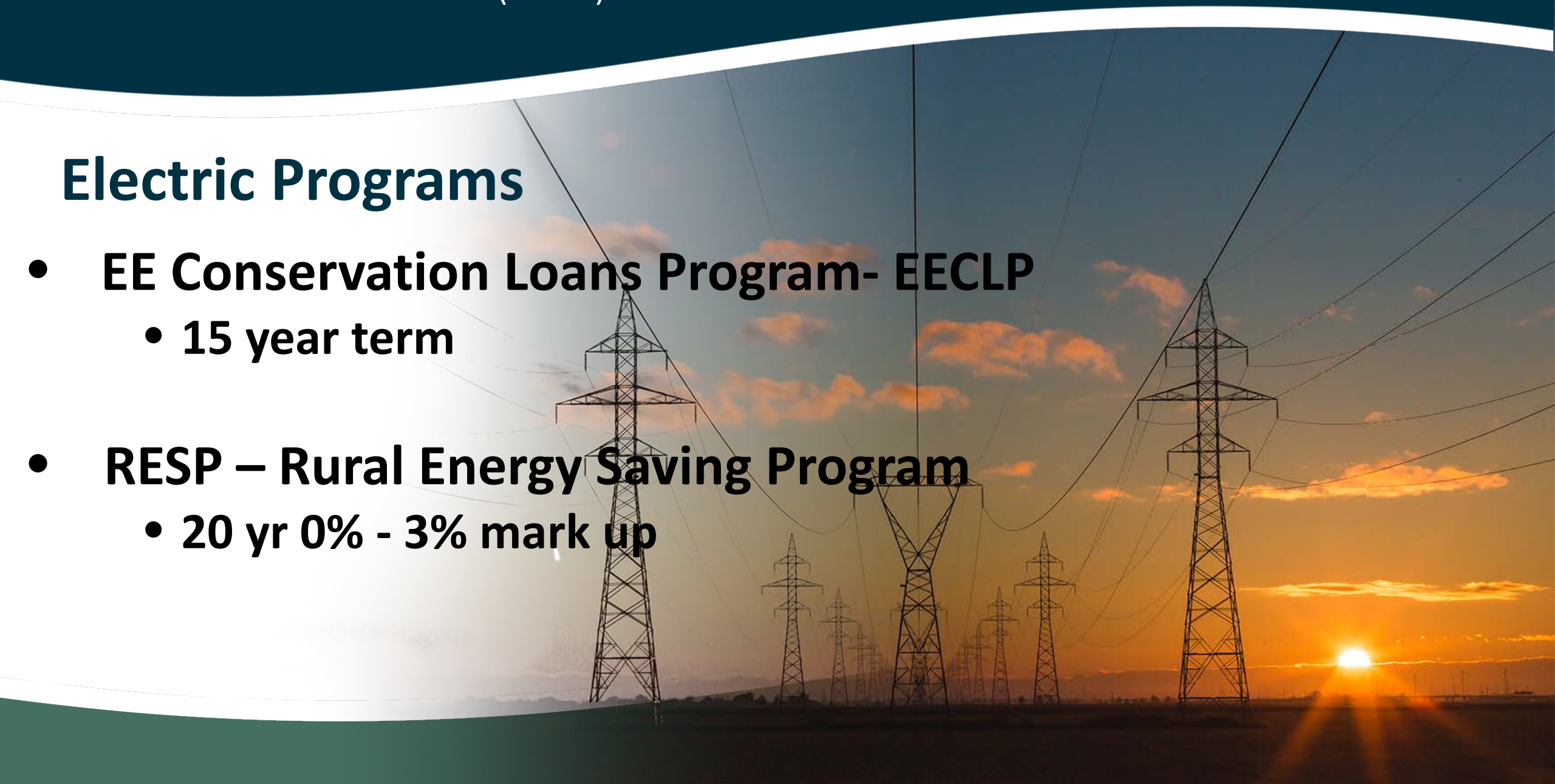
Community Facilities

- Hospitals, health clinics
- Schools
- Daycares
- Fire houses, first responder vehicles and equipment
- Community centers and more.



Electric Programs

- **EE Conservation Loans Program- EECLP**
 - 15 year term
- **RESP – Rural Energy Saving Program**
 - 20 yr 0% - 3% mark up





Rural Utilities Service (RUS)

Electric Programs

Rodney Peach

General Field Representative

PO Box 574 | Nine Mile Falls, WA 99026

Office: 509-276-5516

Cell: 509-309-6923



Water and Environmental Programs

RD Apply

- Safe and secure
- Convenient and available 24/7
- Faster processing with less paper

The screenshot shows the RD Apply web application interface. At the top, the browser address bar displays the URL: <https://rdapply.sc.egov.usda.gov/Intake/spring/AppHomeFlow?execution=e1s1>. The page header includes the USDA logo and the text "United States Department of Agriculture Rural Development". The main navigation bar contains links for "RD Home", "Newsroom", "Contact Us", and "Help". Below the navigation bar, there are buttons for "Add New Application" and "Authorized Representative Request", followed by the text "or Select an existing application from below." A search filter section is visible, with a label "Application Nbr" and a text input field. Below the search filter, there is a section for "Search Results" and an "Export to Excel" button. The footer contains a list of links: "USDA.gov", "Site Map", "Policies and Links", "Our Performance", "Report Fraud on USDA Contracts", "Visit OIG", "FOIA", "Accessibility Statement", "Privacy Policy", "Non-Discrimination Statement", "Information Quality", "USA.gov", and "White House".



United States
Department of
Agriculture

Rural Development



www.rd.usda.gov/ak

Thank You

Jessie Huff

(907) 761-7768

Jessie.huff@ak.usda.gov

USDA is an equal opportunity provider, employer and lender.