



Excel Tips and Tricks

Patrick Dolan

GVEA

Pro tips to make Excel work for you

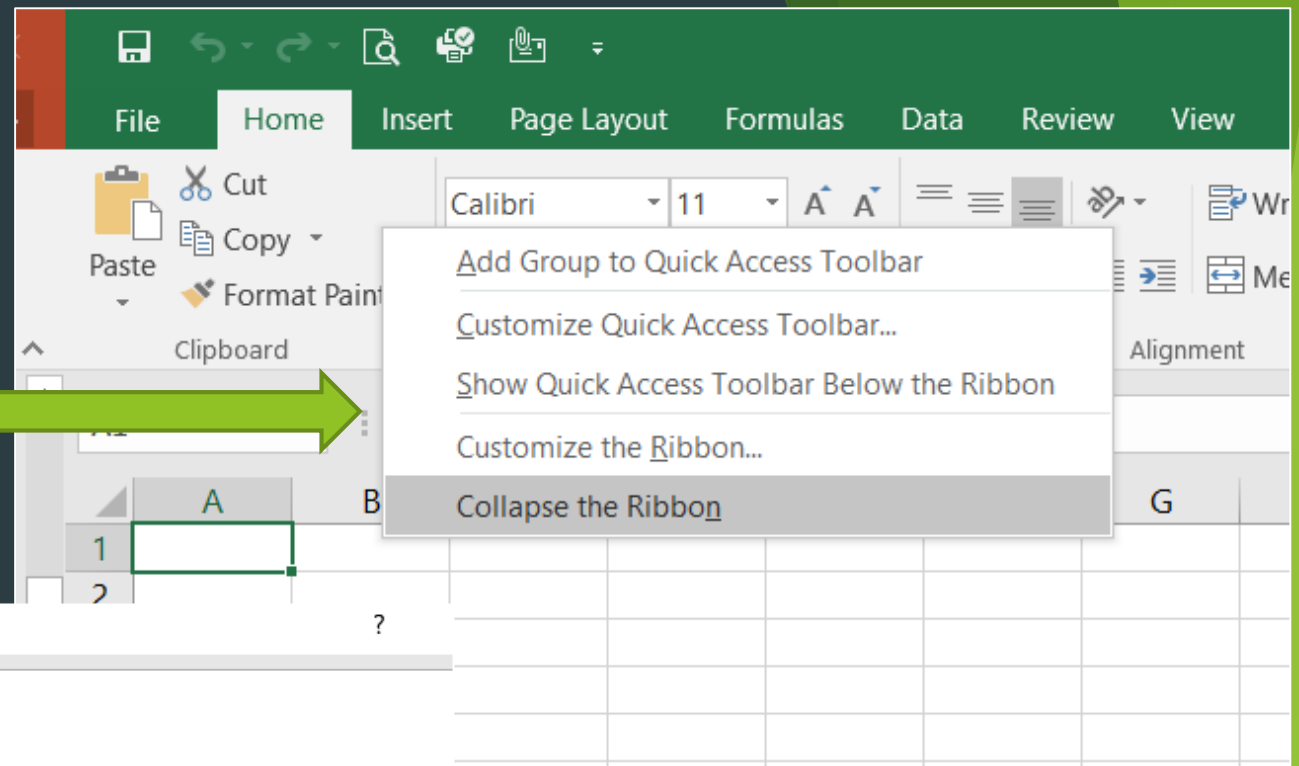
Some things we'll cover

- Toolbar & Quick Access Settings
- Concatenate
- Contrasting Headers
- Formatting Reports for Printing
- Data Validation
- Paste Special
- Pivot Tables



Update Your Settings

- ▶ Display the full toolbar
 - ▶ Remove collapse the Ribbon
 - ▶ Can Customize!



Excel Options

General

Formulas

Proofing

Save

Language

Advanced

Customize Ribbon

Quick Access Toolbar

Add-ins

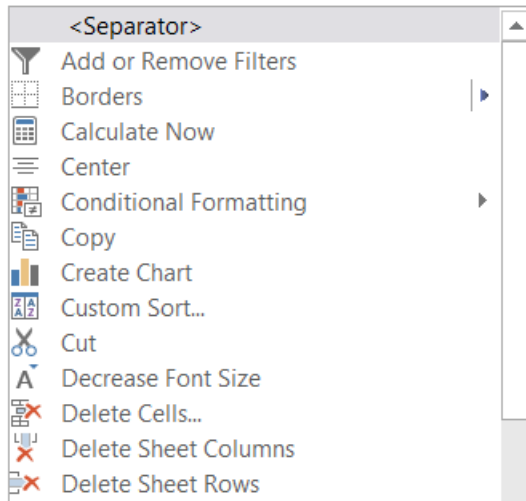
Trust Center



Customize the Quick Access Toolbar.

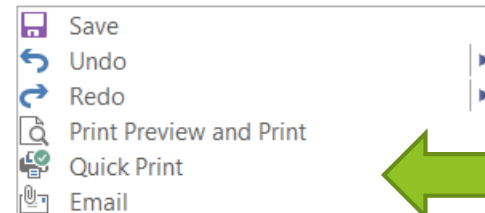
Choose commands from:①

Popular Commands



Customize Quick Access Toolbar:②

For all documents (default)

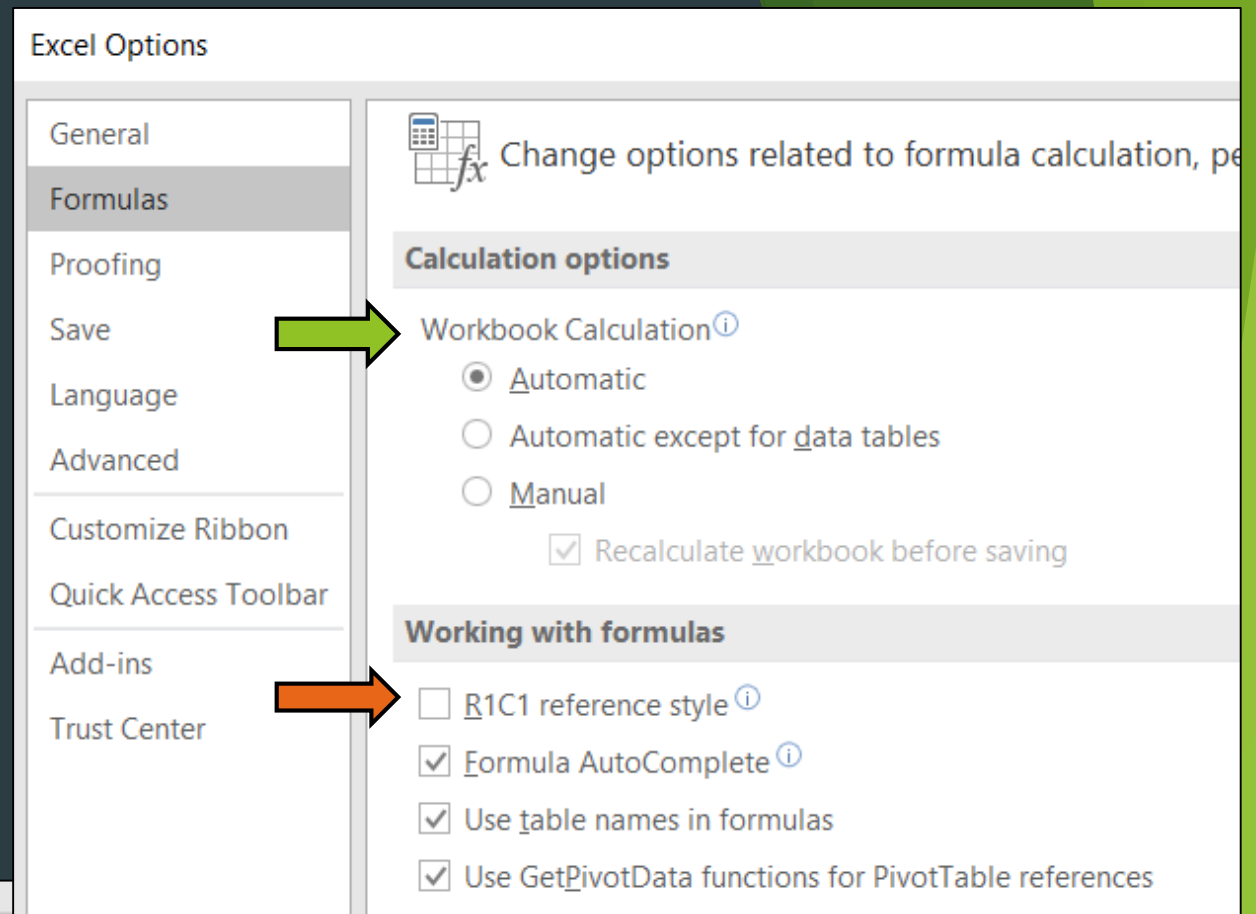
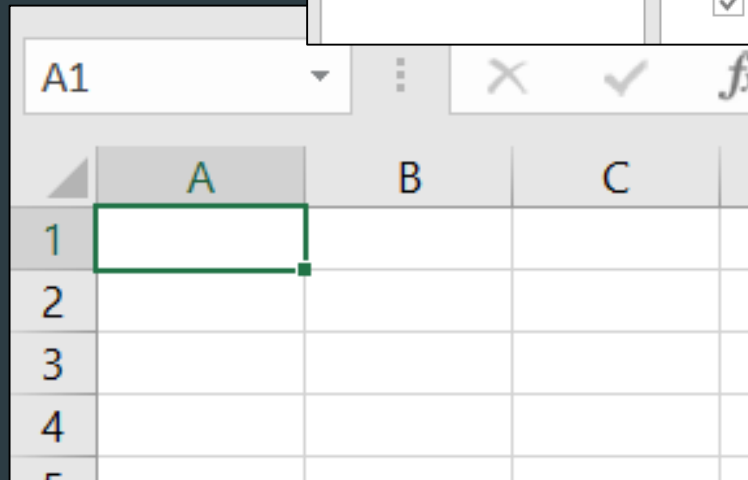
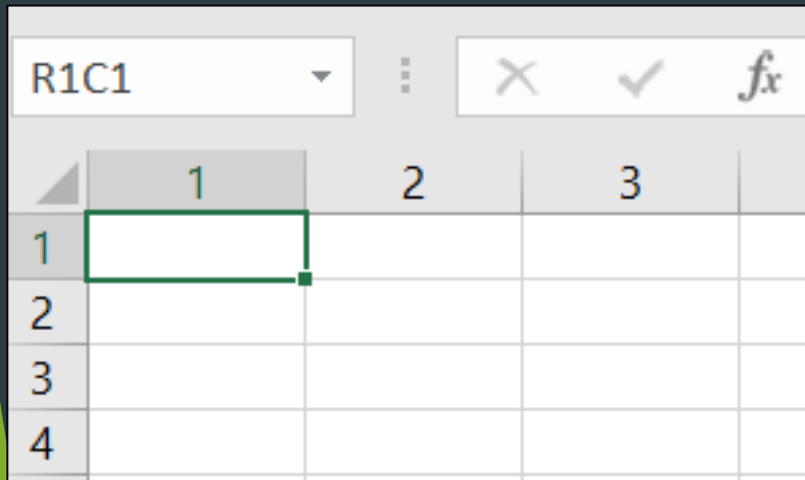


Quick Access Toolbar

- ▶ Make sure it appears above Ribbon
- ▶ Add useful items
 - ▶ Print Preview
 - ▶ Quick Print
 - ▶ Save

More Settings

- ▶ Formula Excel Options
 - ▶ Workbook Calculation
 - ▶ Sometimes can get turned off
- ▶ Why are my Column headers now numbers?
 - ▶ (R1C1 style)
 - ▶ make sure it's unchecked (A1 style)!



Concatenate

Easy way to combine 2 more cells into one

- ▶ =concatenate(item1,item2,etc)
- ▶ = item1&" "&item2 (faster way: no commas or typing concatenate!)
 - ▶ Can use text as well
 - ▶ “ - “ adds some space between joined items
 - ▶ Can add words as well such as “Mega -”

	A	B	C
1	Value	Description	Concatenate
2	101000	Electric Plant In Service	101000 - Electric Plant In Service
3	101110	Leased Computers	101110 - Leased Computers
4	101120	Oracle Lease	101120 - Oracle Lease
5	102000	Elec Plant Purchased/Sold	102000 - Elec Plant Purchased/Sold
6	104000	Elec Plant Leased to Others	104000 - Elec Plant Leased to Others
7	105000	Elec Plant - for Future Use	105000 - Elec Plant - for Future Use
8	106000	Elec Const Complete-Unclass	106000 - Elec Const Complete-Unclass
9	107020	Const WIP - T&D	107020 - Const WIP - T&D
10	107021	Const OH - Clearing T&D	107021 - Const OH - Clearing T&D
11	107023	CIAC - T&D	107023 - CIAC - T&D
12	107060	Northern Intertie	107060 - Northern Intertie

	A	B	C	D
1	item 1	item 2	result	Formulas
2	Two	Apples	Two Apples	=CONCATENATE(A2," ",B2)
3				=A3&" "&B3
4	593100	Line Expense	593100-Line Expense	=CONCATENATE(A4,"-",B4)
5	Man	Excel	MegaMan MegaExcel	=CONCATENATE("Mega",A5," Mega",B5)

Contrasting Headers

- Adds much better visual impacts to reports

	A	B	C
1	Value	Description	Concatenate
2	101000	Electric Plant In Service	101000 - Electric Plant In Service
3	101110	Leased Computers	101110 - Leased Computers
4	101120	Oracle Lease	101120 - Oracle Lease
5	102000	Elec Plant Purchased/Sold	102000 - Elec Plant Purchased/Sold
6	104000	Elec Plant Leased to Others	104000 - Elec Plant Leased to Others
7	105000	Elec Plant - for Future Use	105000 - Elec Plant - for Future Use
8	106000	Elec Const Complete-Unclass	106000 - Elec Const Complete-Unclass
9	107020	Const WIP - T&D	107020 - Const WIP - T&D
10	107021	Const OH - Clearing T&D	107021 - Const OH - Clearing T&D
11	107023	CIAC - T&D	107023 - CIAC - T&D
12	107060	Northern Intertie	107060 - Northern Intertie

	A	B	C
1	Value	Description	Concatenate
2	101000	Electric Plant In Service	101000 - Electric Plant In Service
3	101110	Leased Computers	101110 - Leased Computers
4	101120	Oracle Lease	101120 - Oracle Lease
5	102000	Elec Plant Purchased/Sold	102000 - Elec Plant Purchased/Sold
6	104000	Elec Plant Leased to Others	104000 - Elec Plant Leased to Others
7	105000	Elec Plant - for Future Use	105000 - Elec Plant - for Future Use
8	106000	Elec Const Complete-Unclass	106000 - Elec Const Complete-Unclass
9	107020	Const WIP - T&D	107020 - Const WIP - T&D
10	107021	Const OH - Clearing T&D	107021 - Const OH - Clearing T&D
11	107023	CIAC - T&D	107023 - CIAC - T&D
12	107060	Northern Intertie	107060 - Northern Intertie

	A	B	C
1	Value	Description	Concatenate
2	101000	Electric Plant In Service	101000 - Electric Plant In Service
3	101110	Leased Computers	101110 - Leased Computers
4	101120	Oracle Lease	101120 - Oracle Lease
5	102000	Elec Plant Purchased/Sold	102000 - Elec Plant Purchased/Sold
6	104000	Elec Plant Leased to Others	104000 - Elec Plant Leased to Others
7	105000	Elec Plant - for Future Use	105000 - Elec Plant - for Future Use
8	106000	Elec Const Complete-Unclass	106000 - Elec Const Complete-Unclass
9	107020	Const WIP - T&D	107020 - Const WIP - T&D
10	107021	Const OH - Clearing T&D	107021 - Const OH - Clearing T&D
11	107023	CIAC - T&D	107023 - CIAC - T&D
12	107060	Northern Intertie	107060 - Northern Intertie

Setting up to print

- Use Footers for Multiple Pages

Who wants 108 unmarked pages?

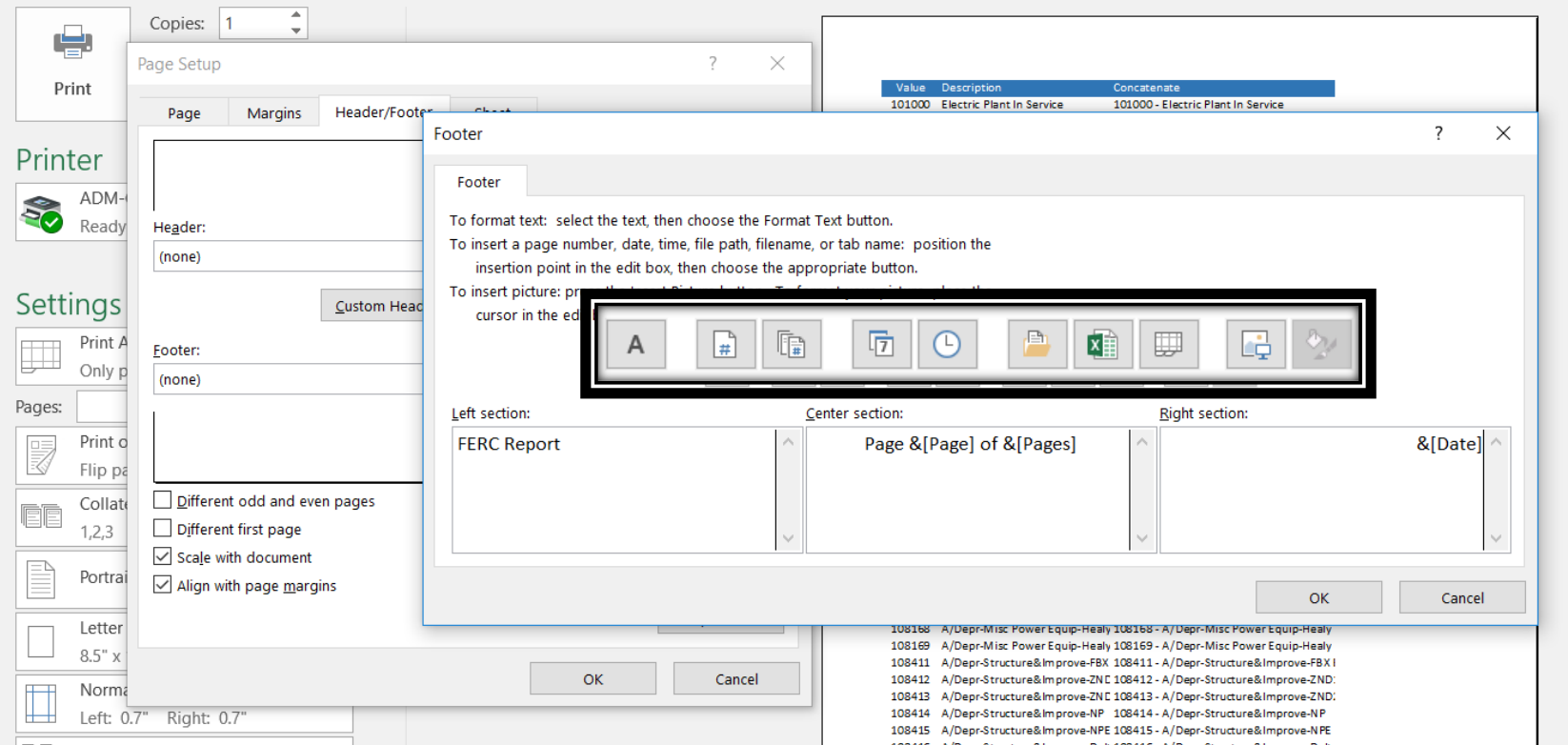
◀ 1 of 108 ▶

108425	A/Depr-Fuel Holder&Product-Nr	108425	A/Depr-Fuel Holder&Product-Nr
108426	A/Depr-Fuel Holder&Product-De	108426	A/Depr-Fuel Holder&Product-De
108432	A/Depr-Prime Movers-ZND1	108432	A/Depr-Prime Movers-ZND1
108433	A/Depr-Prime Movers-ZND2	108433	A/Depr-Prime Movers-ZND2

- Page Setup, Header/Footer

- Use custom!
- “Page “(button)” of “(button2)”
- Report name and Date?

Print



Setting up to print

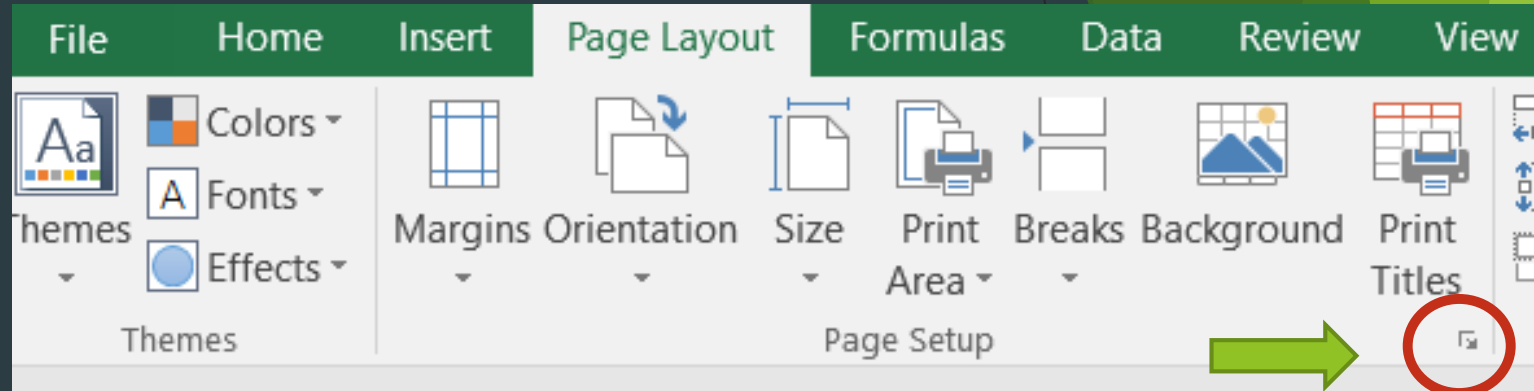
► Setup Rows to Repeat

► Page Layout Ribbon

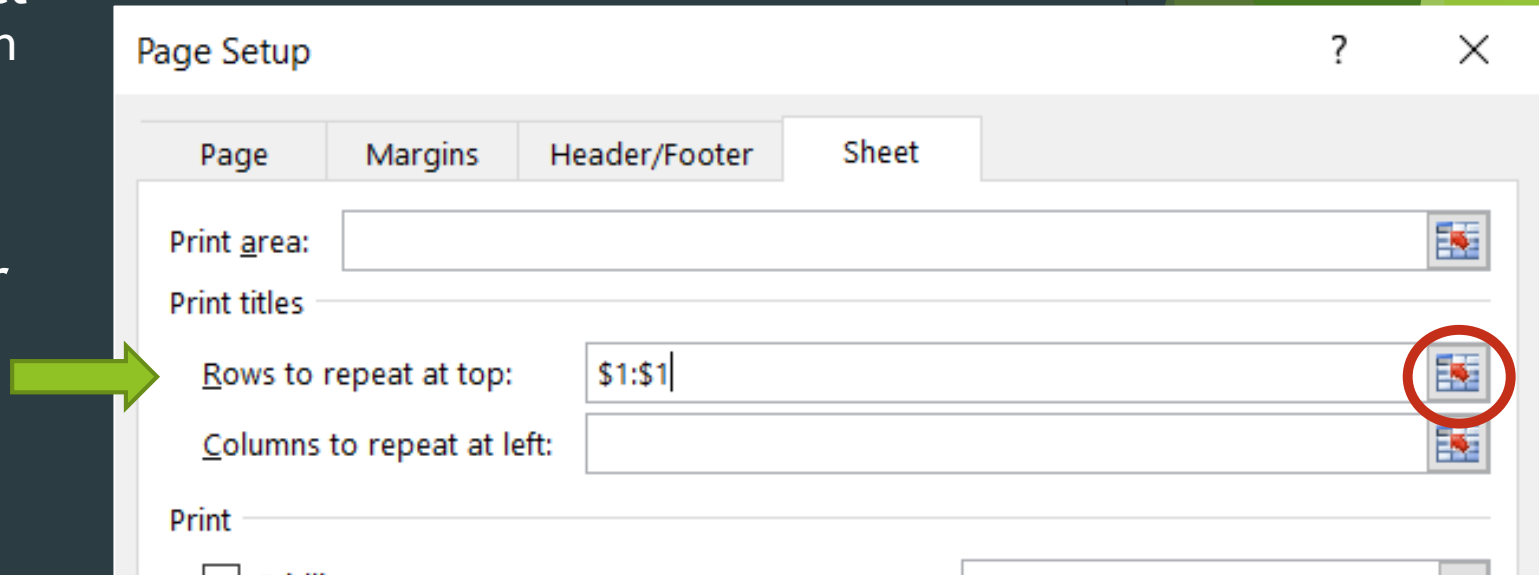
► Box on Page Setup

► Sheet Tab

► Click in Icon at end and select the row(s) you want and each page of the report to repeat




* Can Make total report longer




Printing setup

- Look at Scaling under print preview
 - Are all your columns on one page?
- Landscape or Portrait?


Print

 **Print**


Copies:


Printer  ADM-CAPCRED-CLR on GVPRI...
Ready [Printer Properties](#)


Settings


 **Print Active Sheets**
Only print the active sheets


Pages: to


 **Print on Both Sides**
Flip pages on long edge


 **Collated**
1,2,3 1,2,3 1,2,3


 **Portrait Orientation**


 **Letter**
8.5" x 11"


 **Normal Margins**
Left: 0.7" Right: 0.7"

 **No Scaling**
Print sheets at their actual size [Page Setup](#)


 **No Scaling**
Print sheets at their actual size

 **Fit Sheet on One Page**
Shrink the printout so that it fits on one page

 **Fit All Columns on One Page**
Shrink the printout so that it is one page wide

 **Fit All Rows on One Page**
Shrink the printout so that it is one page high

[Custom Scaling Options...](#)

 **No Scaling**
Print sheets at their actual size [Page Setup](#)

Margins

Adjust Margins!

- ▶ Easier to Read
- ▶ Looks Better
- ▶ Can reduce report size

Print

Print icon | Copies: 1

Printer ADM-CAPCRED-CLR on GVPRI... Ready [Printer Properties](#)

Settings

Print Active Sheets
Only print the active sheets

Pages: to

Print on Both Sides
Flip pages on long edge

Collated
1,2,3 1,2,3 1,2,3

Portrait Orientation

Letter (8.5 x 11")
8.5" x 11"

Normal Margins
Left: 0.7" Right: 0.7"

No Scaling
Print sheets at their actual size [Page Setup](#)

Margin Button

1 of 1

Final Report Look

Report Title
Column Headers

► Results

- Good Spacing
- Report has Title on each page
- Page numbers
- Date of report
- Contrasting Header

Data Spacing

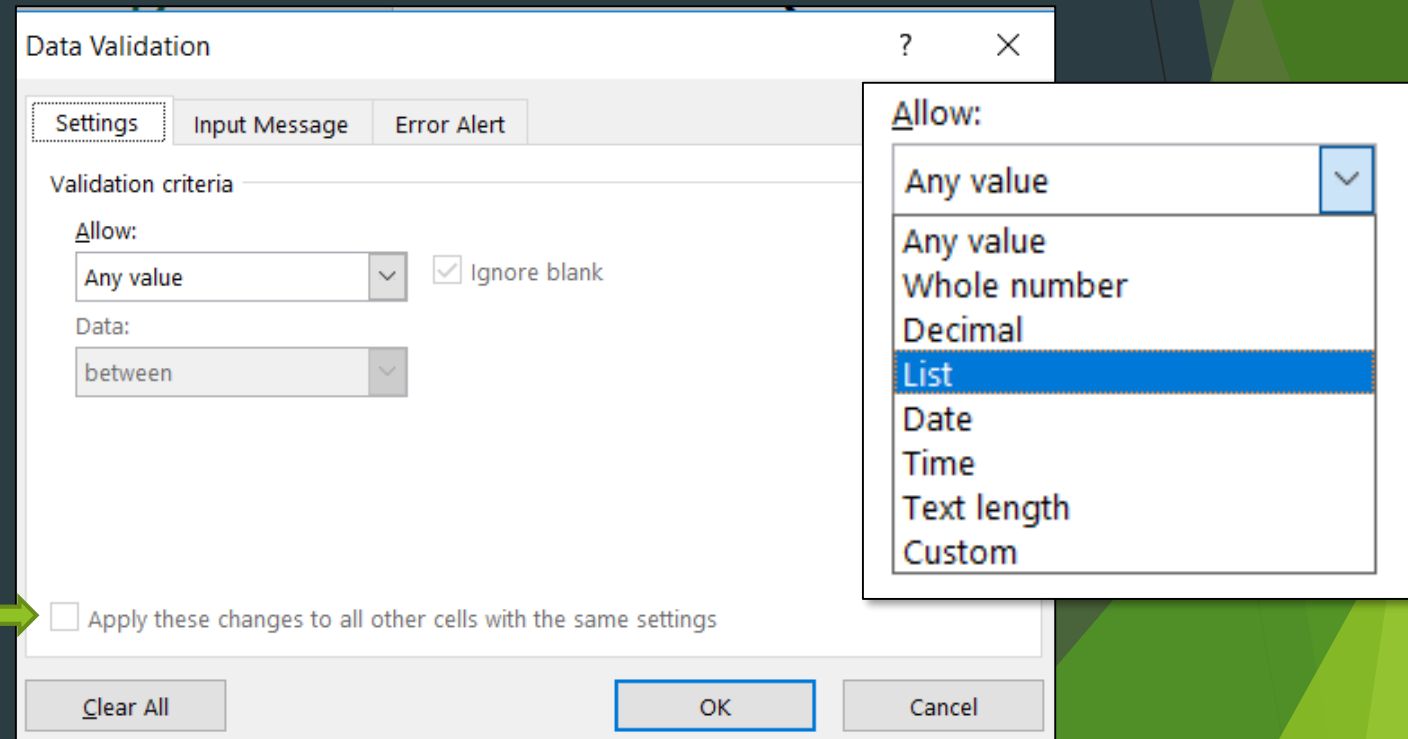
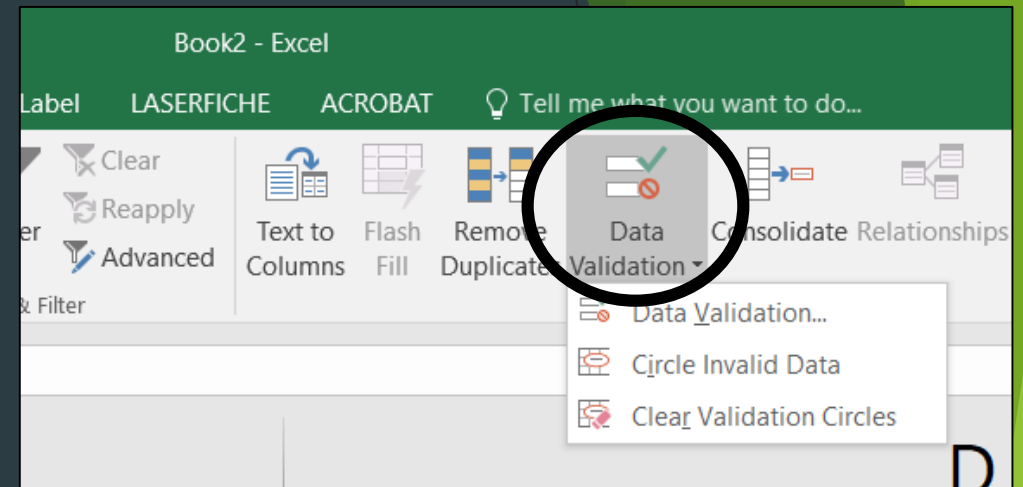
Page Footer

2018 FERC Account Listing		
Value	Description	Concatenate
101000	Electric Plant In Service	101000 - Electric Plant In Service
101110	Leased Computers	101110 - Leased Computers
101120	Oracle Lease	101120 - Oracle Lease
102000	Elec Plant Purchased/Sold	102000 - Elec Plant Purchased/Sold
104000	Elec Plant Leased to Others	104000 - Elec Plant Leased to Others
105000	Elec Plant - for Future Use	105000 - Elec Plant - for Future Use
106000	Elec Const Complete-Undass	106000 - Elec Const Complete-Undass
107020	Const WIP - T&D	107020 - Const WIP - T&D
107021	Const OH - Clearing T&D	107021 - Const OH - Clearing T&D
107023	CIAC - T&D	107023 - CIAC - T&D
107060	Northern Intertie	107060 - Northern Intertie
107061	N Intertie-Const OH	107061 - N Intertie-Const OH
107240	CWIP-NPEP	107240 - CWIP-NPEP
107251	HCCP - Retrofit	107251 - HCCP - Retrofit
107253	Hly 2-Acquisition&Upgrade	107253 - Hly 2-Acquisition&Upgrade
107310	Special Equip - Meters	107310 - Special Equip - Meters
107320	Spec Equip-Transformers	107320 - Spec Equip-Transformers
107410	General Plant WIP	107410 - General Plant WIP
107420	General Plant WIP-Pipeline	107420 - General Plant WIP-Pipeline
108118	A/Depr-Structure&Improve-Healy 1	108118 - A/Depr-Structure&Improve-Healy 1
108119	A/Depr-Structure&Improve-Healy 2	108119 - A/Depr-Structure&Improve-Healy 2
108125	A/Depr-Boiler Plnt Equip-NPE	108125 - A/Depr-Boiler Plnt Equip-NPE
108128	A/Depr-Boiler Plnt Equip-Healy 1	108128 - A/Depr-Boiler Plnt Equip-Healy 1
108129	A/Depr-Boiler Plnt Equip-Healy 2	108129 - A/Depr-Boiler Plnt Equip-Healy 2
108145	A/Depr-Turbogenerator-NPE	108145 - A/Depr-Turbogenerator-NPE
108148	A/Depr-Turbogenerator-Healy 1	108148 - A/Depr-Turbogenerator-Healy 1
108149	A/Depr-Turbogenerator-Healy 2	108149 - A/Depr-Turbogenerator-Healy 2
108155	A/Depr-Access Elec Equip-NPE	108155 - A/Depr-Access Elec Equip-NPE
108158	A/Depr-Access Elec Equip-Healy 1	108158 - A/Depr-Access Elec Equip-Healy 1
108159	A/Depr-Access Elec Equip-Healy 2	108159 - A/Depr-Access Elec Equip-Healy 2
108165	A/Depr-Misc Power Equip-NPE	108165 - A/Depr-Misc Power Equip-NPE
108168	A/Depr-Misc Power Equip-Healy 1	108168 - A/Depr-Misc Power Equip-Healy 1
108169	A/Depr-Misc Power Equip-Healy 2	108169 - A/Depr-Misc Power Equip-Healy 2
108411	A/Depr-Structure&Improve-FBX EMD	108411 - A/Depr-Structure&Improve-FBX EMD
108412	A/Depr-Structure&Improve-ZND1	108412 - A/Depr-Structure&Improve-ZND1
108413	A/Depr-Structure&Improve-ZND2	108413 - A/Depr-Structure&Improve-ZND2
108414	A/Depr-Structure&Improve-NP	108414 - A/Depr-Structure&Improve-NP
108415	A/Depr-Structure&Improve-NPE	108415 - A/Depr-Structure&Improve-NPE
108416	A/Depr-Structure&Improve-Delta	108416 - A/Depr-Structure&Improve-Delta
108422	A/Depr-Fuel Holder&Produce-ZND1	108422 - A/Depr-Fuel Holder&Produce-ZND1
108423	A/Depr-Fuel Holder&Produce-ZND2	108423 - A/Depr-Fuel Holder&Produce-ZND2
108424	A/Depr-Fuel Holder&Produce-NP	108424 - A/Depr-Fuel Holder&Produce-NP
108425	A/Depr-Fuel Holder&Produce-NPE	108425 - A/Depr-Fuel Holder&Produce-NPE
FERC Report		
Page 1 of 114		10/8/2018

Data Validation

- ▶ Found under Data Ribbon
- ▶ Use when you want a specific value entered
- ▶ Versatile Tool
 - ▶ Can make drop down with values
 - ▶ Can make error messages
 - ▶ Can set input ranges

Check “Apply” if you have many other cells that need this validation



Validation Examples

Setup Range

Data Validation

Settings Input Message Error Alert

Validation criteria

Allow:

Decimal ☒ Ignore blank

Data:

between

Minimum:

.01

Maximum:

.99

☐ Apply these changes to all other cells with the same settings

Clear All OK

Target Account
101000 - Electric Plant In Service
101110 - Leased Computers
101120 - Oracle Lease
102000 - Elec Plant Purchased/Sold
104000 - Elec Plant Leased to Others
105000 - Elec Plant - for Future Use
106000 - Elec Const Complete-Unclass
107020 - Const WIP - T&D



Percentage

1.15

Out of Range

Please enter a value between 0.01 to 0.99

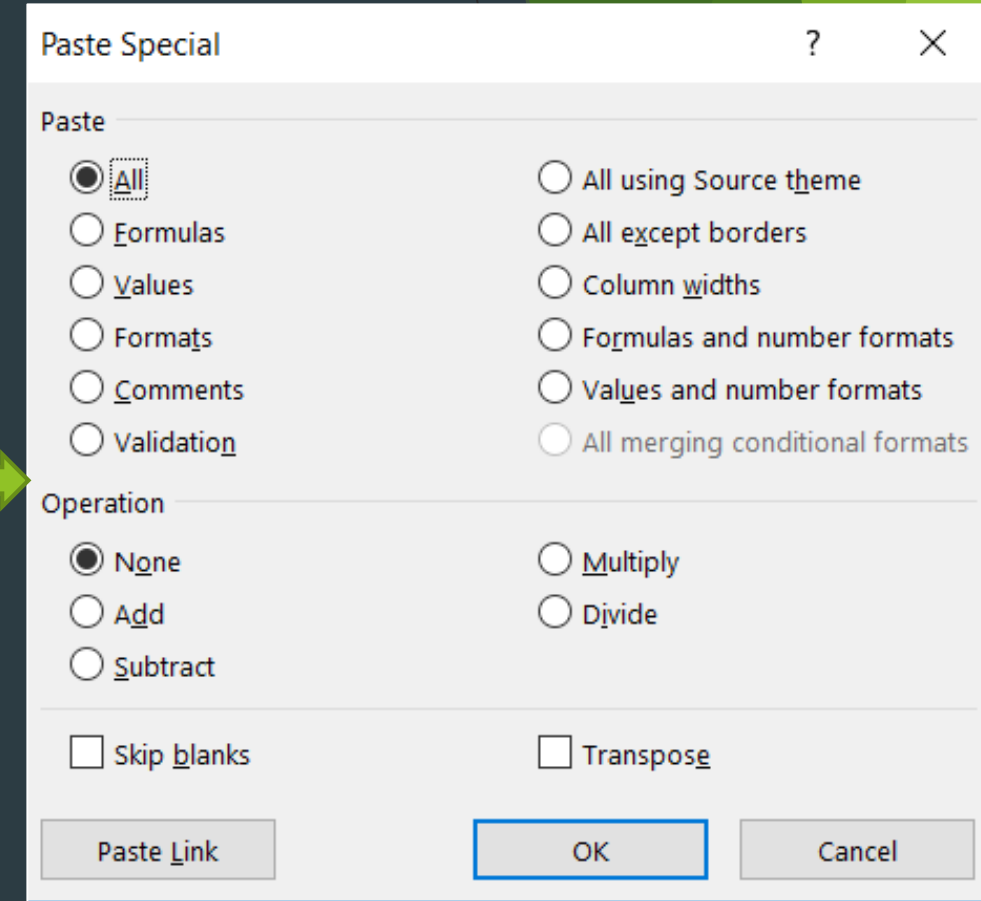
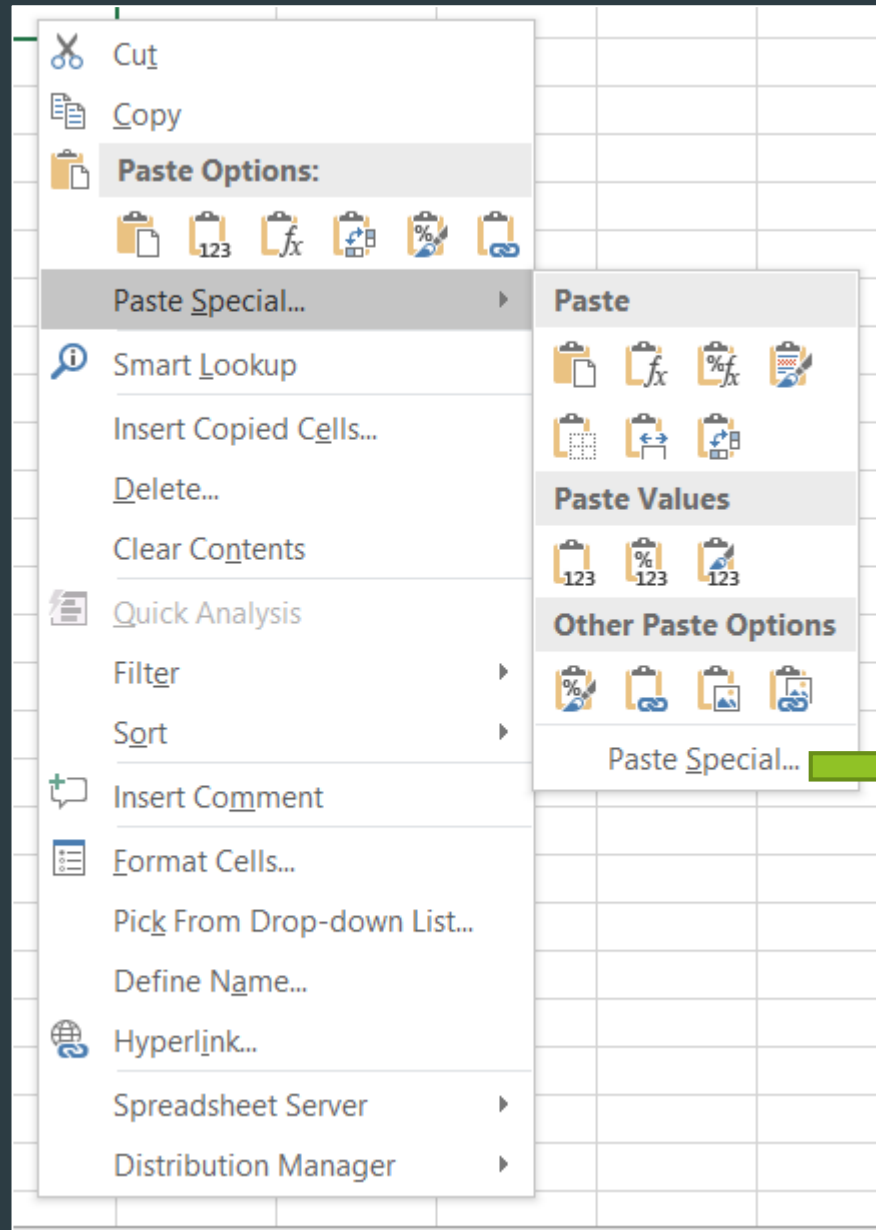
Retry Cancel Help

Percentage
Please Enter in a
percentage from
0.01% to 0.99%

Paste Special

Lots of Options

- Right click/home menu
 - Paste special
- Can paste with changing formats
- Can paste just formats
- Can Multiply!
 - -1 Trick
- Transpose to switch columns and rows
- Values!



Pivot Tables

- ▶ What are they?
 - ▶ Advanced Analysis tool in MS Excel
- ▶ Why use them
 - ▶ To find meaning in data
 - ▶ Summarize Vast amounts of data fast
 - ▶ Easily change view of summary
- ▶ Relevance to Electric Utilities?
 - ▶ Accounting\Treasury
 - ▶ Dispatch\Power Plants
 - ▶ Member Services\Capital Credits
 - ▶ Many more

The screenshot shows an Excel PivotTable and the PivotTable Fields task pane. The PivotTable is titled 'Sum of other_1_kwh_generated' and has a total of 10,517,788. The task pane shows the following fields:

- ☐ pce_id
- ☐ community_names
- ☐ plant_name
- ☒ plant_utility_name
- ☐ plant_utility_regulatory_status_name
- ☐ plant_utility_certificate
- ☒ plant_utility_utility_type_name
- ☐ plant_utility_eia_operator_id
- ☐ plant_utility_pce_id
- ☐ plant_pce_status_name

The task pane also shows the following filters and columns:

- FILTERS**: year
- COLUMNS**: Σ Values
- ROWS**: plant_utility_utilit...
- VALUES**: Sum of fuel_use.

ed	Sum of other_1_kwh_generated
36	10,517,788
0	4,572,473
0	0
.09	0
0	0
.07	0
.20	0
0	0
0	4,625,497
0	0
0	0
0	0
0	0
0	0
0	170,104
0	1,149,714
36	10,517,788

Pivot Table Basics

- ▶ Data Table Format
 - ▶ All columns must have headers
 - ▶ Highlight the Data you want in Pivot Table
 - ▶ Insert Ribbon, Pivot Table
 - ▶ Data subtotals - exclude

Create PivotTable

Choose the data that you want to analyze

☒ Select a table or range

Table/Range:

☐ Use an external data source

Choose Connection...

Connection name:

☐ Use this workbook's Data Model

Choose where you want the PivotTable report to be placed

☒ New Worksheet

☐ Existing Worksheet

Location:

Choose whether you want to analyze multiple tables

☐ Add this data to the Data Model

OK Cancel

PivotTable Fields

Choose fields to add to report:

Search

- ☐ Value
- ☐ Description
- ☐ Enabled
- ☐ From
- ☐ To
- ☐ Parent
- ☐ Group
- ☐ Level
- ☐ Qualifiers

MORE TABLES

Drag fields between areas below:

▼ FILTERS	COLUMNS
≡ ROWS	Σ VALUES

☐ Defer Layout Update

UPDATE

PivotTable Fields

Choose fields to add to report:

Search

- ☐ Month
- ☐ Company
- ☐ Fund
- ☐ Section
- ☒ Activity
- ☒ FERC
- ☐ Location
- ☒ Cost Type
- ☐ GL
- ☐ GL Date

Drag fields between areas below:

▼ FILTERS	COLUMNS
Activity ▼	
≡ ROWS	Σ VALUES
FERC ▼	Sum of Net ▼
Cost Type ▼	
Project ▼	

☐ Defer Layout Update

UPDATE

Example

2014 Co-op Power Cost Equilization Data: Generation kWh and Fuel use by Co-op

year 2014

Row Labels	Sum of fuel_used_gal	Sum of diesel_kwh_generated	Sum of hydro_kwh_generated	Sum of other_1_kwh_generated
Electric Co-op	14,160,625	196,061,164	24,391,836	10,517,788
Alaska Village Electric Cooperative	8,507,338	114,621,200	0	4,572,473
Arctic Village Electric Company	43,333	528,768	0	0
Cordova Electric Cooperative	577,842	7,747,532	19,481,409	0
Elfin Cove Utility Commission	22,906	279,623	0	0
I-N-N Electric Coop, Inc	1,420	17,856	3,908,007	0
Inside Passage Electric	651,910	9,247,373	1,002,420	0
Kobuk Valley Electric Company	0	0	0	0
Kotzebue Electric Association	1,195,116	17,116,335	0	4,625,497
Levelock Electrical Coop	40,910	480,500	0	0
Middle Kuskokwim Electric	92,449	949,224	0	0
Naknek Electric Association	1,396,096	21,796,130	0	0
Nelson Lagoon Electrical Coop	34,033	334,783	0	0
Nushagak Electric Cooperative	1,281,644	18,811,000	0	0
Tuntutuliak Community	83,641	825,746	0	170,104
Unalakleet Valley Electric Cooperative	231,987	3,305,094	0	1,149,714
Grand Total	14,160,625	196,061,164	24,391,836	10,517,788

	W	X
rate effective_rate pce_elig		
0.63	0.32	3
0.63	0.32	3
0.63	0.32	3
0.81	0.39	3
0.81	0.39	2
0.81	0.39	1
0.82	0.38	1
0.82	0.38	1
0.82	0.46	1
0.82	0.51	2
0.82	0.51	1
0.82	0.64	1
0.82	0.64	2
0.82	0.63	2
0.82	0.63	2
0.82	0.63	1
0.81	0.63	1
0.81	0.63	1
0.81	0.63	1
0.81	0.76	1
0.81	0.76	1
0.64	0.56	1

80	331010	Akhiok	Akhiok	Akhiok, City of Not regulated	TRUE	Public Electric Utility	PCE Eligible In	FALSE	SC	Southcentral	2001	7 summer	AKHIK	FALSE	0.37	0.2132	0.1961	0.1739
81	331010	Akhiok	Akhiok	Akhiok, City of Not regulated	TRUE	Public Electric Utility	PCE Eligible In	FALSE	SC	Southcentral	2001	8 summer	AKHIK	FALSE	0.37	0.2132	0.1961	0.1739
82	331010	Akhiok	Akhiok	Akhiok, City of Not regulated	TRUE	Public Electric Utility	PCE Eligible In	FALSE	SC	Southcentral	2001	9 summer	AKHIK	FALSE	0.37	0.2132	0.1961	0.1739
83	331010	Akhiok	Akhiok	Akhiok, City of Not regul										FALSE	0.37	0.2132	0.1961	0.1739
84	331010	Akhiok	Akhiok	Akhiok, City of Not regul										FALSE	0.37	0.2132	0.1961	0.1739
85	331010	Akhiok	Akhiok	Akhiok, City of Not regul										FALSE	0.37	0.25	0.23	0.14
86	331010	Akhiok	Akhiok	Akhiok, City of Not regul										FALSE	0.37	0.25	0.2	0.17
87	331010	Akhiok	Akhiok	Akhiok, City of Not regulated	TRUE	Public Electric Utility	PCE Eligible In	FALSE	SC	Southcentral	2002	2 winter	AKHIK	FALSE	0.37	0.25	0.2	0.17
88	331010	Akhiok	Akhiok	Akhiok, City of Not regulated	TRUE	Public Electric Utility	PCE Eligible In	FALSE	SC	Southcentral	2002	3 winter	AKHIK	FALSE	0.37	0.25	0.2	0.17

This data set is over 27k rows and 43 columns wide

Pivot Table Tips

- ▶ Watch for Filters, they can help
 - ▶ Can check/uncheck some values
- ▶ Experiment
- ▶ Calculated Fields
- ▶ Can Turn Totals on\off
- ▶ Rows\Columns
 - ▶ Rows\Columns
- ▶ REFRESH!
- ▶ Can link to cells in a pivot

	A	B
1	Activity	(All)
2		
3	Row Labels	Sum of Net
4	930240	6,810.80
5	70200	2,506.17
6	(blank)	2,506.17
7	70420	77.95
8	(blank)	77.95
9	70460	4,226.68
10	201510102	594.60
11	(blank)	3,632.08
12	930250	15,822.33
13	70460	10,282.33
14	201510102	512.34
15	(blank)	9,769.99
16	70470	5,540.00
17	(blank)	5,540.00
18	Grand Total	22,633.13

Select field: FERC

Sort A to Z
Sort Z to A
More Sort Options...

☒ Clear Filter From "FERC"

Label Filters
Value Filters

Search

☒ (Select All)
☐ 426100
☐ 549100
☐ 570110
☐ 921000
☐ 923000
☒ 930240
☒ 930250

OK Cancel

Questions?

Patrick Dolan
GVEA